

ILL. No.	Part No.	Description	Qty. Rqd.
----------	----------	-------------	-----------

## WIPERS AND WASHERS

### REMARKS LEGEND -

Vehicle i.d. (v) numbers:

TA = 1996 model year;

VA = 1997 model year;

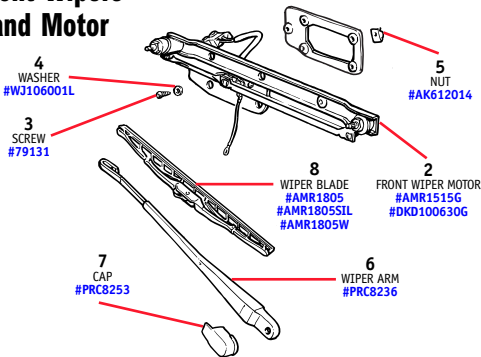
WA = 1998 model year



**1**  
WIPER BLADE KIT  
#7503  
#7503SILK

1	7503	WIPER BLADE KIT, set of 3, standard <i>From (v) 1994-1999</i>	1
	7503SILK	WIPER BLADE KIT, set of 3, silicone <i>From (v) 1994-1999</i>	1

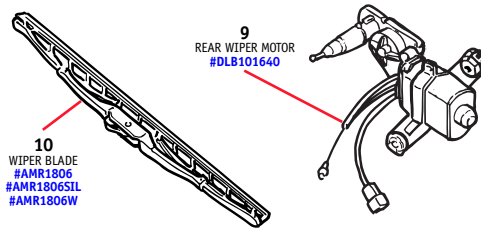
### Front Wipers and Motor



2	AMR1515G	WIPER MOTOR ASSEMBLY, windshield, Genuine	1
	DKD100630G	WIPER MOTOR ASSEMBLY, windshield, Genuine <i>Use with YMQ104550G link lead to replace AMR1515G</i>	1
	YMQ104550G	LINK LEAD, windshield wiper motor, Genuine <i>Use with DKD100630G motor to replace AMR1515G</i>	1
3	79131	SCREW, securing wiper mechanism	6
4	WJ106001L	WASHER, plain	6
5	AK612014	NUT, spring	6
6	PRC8236	WIPER ARM, windshield <i>Through 1997 model year</i>	2
7	PRC8253	CAP, wiper arm	2

ILL. No.	Part No.	Description	Qty. Rqd.
----------	----------	-------------	-----------

### Rear Wiper and Motor



8	AMR1805	WIPER BLADE, windshield, standard <i>Through 1999 model year</i>	2
	AMR1805SIL	WIPER BLADE, windshield, silicone <i>Through 1999 model year</i>	2
	AMR1805W	WIPER BLADE, windshield, winter grade <i>Through 1999 model year</i>	2
9	DLB101640	WIPER MOTOR ASSEMBLY, rear screen	1
	WWH	HOSE, Windshield Washer, 5 ft.	*NLA
10	AMR1806	WIPER BLADE, rear screen, standard	1
	AMR1806SIL	WIPER BLADE, rear screen, silicone	1
	AMR1806W	WIPER BLADE, rear screen, winter grade	1

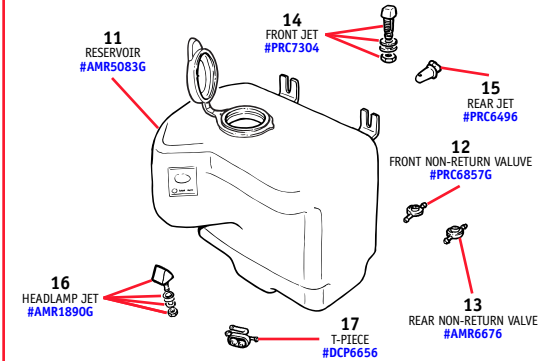
### TECH TIP: Winter Wiper Blades



It's not a bad idea to install winter wiper blades before the snow and ice set in. Winter wipers are easily recognized by their protective rubber cover over the wiper to prevent ice build up and keep it flexible (and your windshield clear!). We also recommend you check your wiper bolts when changing your wipers. Just lift the plastic cap on the base of the wiper arm and you'll find a 13mm nut. With the wipers off, adjust the wiper arm to its correct stationary position and tighten, if necessary.

ILL. No.	Part No.	Description	Qty. Rqd.
----------	----------	-------------	-----------

### Washer System



11	AMR5083G	RESERVOIR, windshield washer, Genuine <i>From (v) 1996 model year on</i>	1
12	PRC6857G	VALVE, non-return, windshield, Genuine <i>For 5mm dia tubing</i>	1
13	AMR6676	VALVE, non-return, rear screen <i>For 4mm dia tubing</i>	1
14	PRC7304	JET ASSEMBLY, windshield washer	2
15	PRC6496	JET ASSEMBLY, rear screen washer <i>From (v) TA169766 and TA503644 on</i>	1
16	AMR1890	JET ASSEMBLY, headlamp washer	2
17	DCP6656	T-PIECE AND VALVE, headlamp washer	1
18	AMR3271	WASHER PUMP, front washer	*NLA
	DMC10023	WASHER PUMP, rear washer	*NLA
	AMR3661	WASHER PUMP, headlamp washer	*NLA
	AFU4506	GROMMET <i>for pumps AMR3271, DMC10023 and AMR3661</i>	*NLA

### TECH TIP: Leaky Headlamp Washers



If you're constantly running out of headlamp washer fluid, the problem is usually a leaky check valve, which allows the fluid to gravity-feed out of the jets beneath your headlamps. The T-piece check valve (see item 17) is a simple replacement and located under the bumper on the passenger side.

\*NLA = No Longer Available