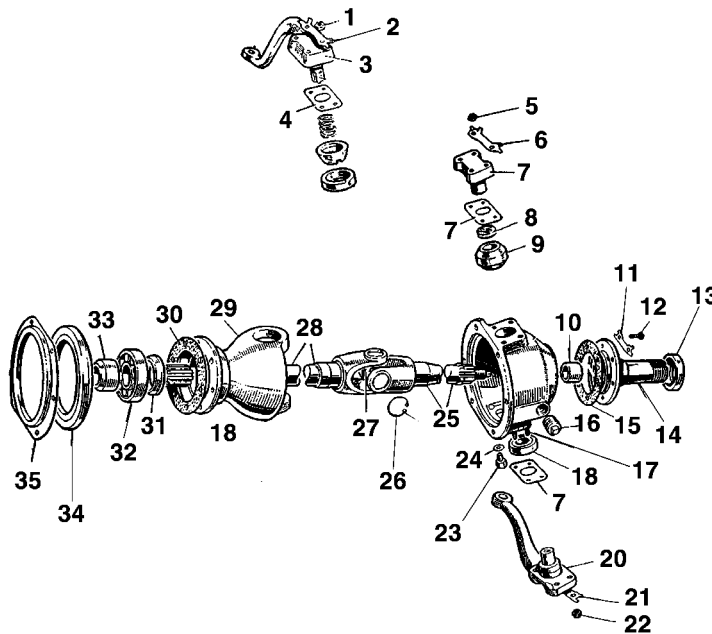


Swivel Balls



FRONT AXLE & SWIVEL HOUSING

Ref #	Description	Qty	Part #
→	SWIVEL BALL REBUILT KIT COMPL.	KIT	6383
→	GAITER KIT, LEATHER FOR SWIVEL BALLS	KIT	2801
→	SWIVEL PIN REBUILD KIT II & IIA	KIT	4073
→	SWIVEL PIN REBUILD KIT, LATE IIA & III	KIT	4069
2	Locker, 3/8" Studs	8	1254
4	Shim, .003" for 3/8" Studs	as needed	1377
4	Shim, .005" for 3/8" Studs	as needed	1348
4	Shim, .010 for 3/8" Studs	as needed	1349
4	Shim, .030" for 3/8" Studs	as needed	1361
5	Nut, 7/16" BSF for Axles w/ 7/16" Studs	16	*NLA 1302
6	Locker, 7/16" Studs	8	303
6A	Top cap Plate, IIA	2	8241
7	Shim, .003" for 7/16" Studs	as needed	292
7	Shim, .005" for 7/16" Studs	as needed	293
7	Shim, .010 for 7/16" Studs	as needed	294
7	Shim, .030" for 7/16" Studs	as needed	297
8	Thrust Washer / Spacer	2	279
9	Railco Bush	2	443
10	Bush for Driving Shaft, Early Type	2	87
11	Locker	6	41
12	Bolt	6	899
13	Distance Piece, Bearing, Hub Oil Seal	2	1223
14	Stub Axle Assembly	2	7147
15	Joint Washer	2	1967
16	Oil Filler Plug	2	897
17	Special Stud 7/16"	4	304
18	Bearing, Swivel Pin Bottom	2	266
not shown	O Ring, for Steering Lever	2	6028

*NLA = No longer available.

Ref #	Description	Qty	Part #
21	Locker, 7/16" Studs	8	303
22	Nut, 7/16" BSF	16	1302
23	Drain Plug	2	236070
24	Joint Washer, Drain Plug	2	1451
25	Stub Shaft	2	1609
26	Circlip	8	1454
27	Universal Joint	2	286
28	Halfshaft only, RH	1	*NLA 1611
28	Halfshaft only, LH	1	*NLA 1612
29	Housing to Swivel Pin Bearing	2	6380
30	Joint Washer	2	894
31	Distance Piece for Bearing	2	1974
32	Bearing, for Halfshaft	2	91
33	Retaining Collar, for Bearing	2	746
34	Oil Seal, Swivel Ball	2	1419
35	Retainer, Swivel Ball Oil Seal	1	1420

*NLA = No longer available.

Some items in this section may be available on a special order basis or phone-order only. Please call for pricing and availability.