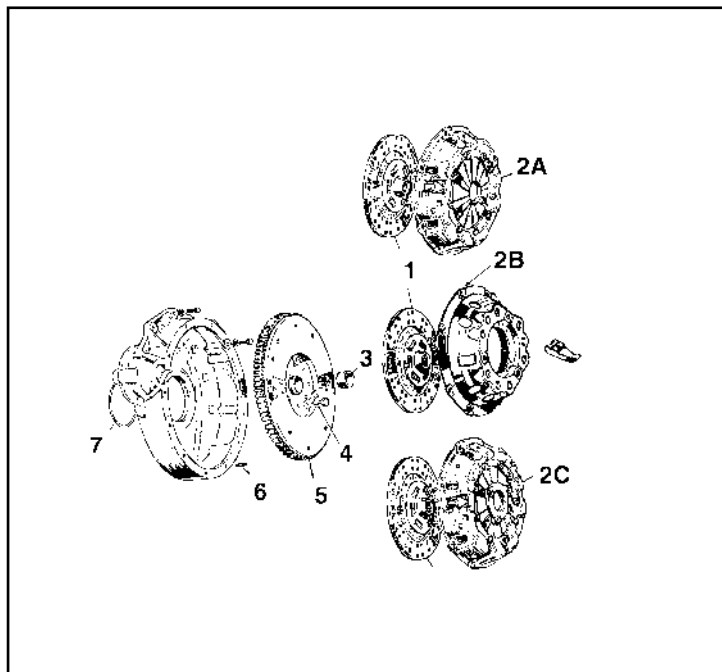


CLUTCH - HYDRAULICS

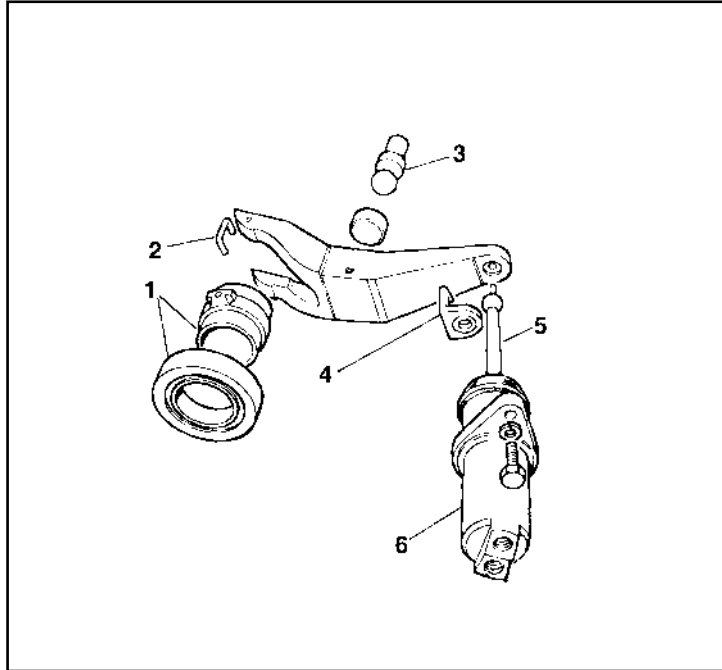
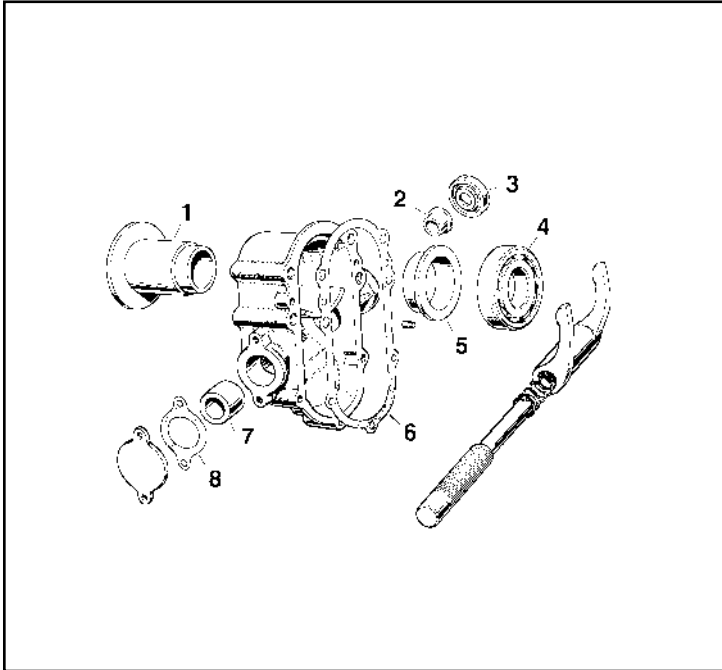
Description	Qty	Part #
CLUTCH MASTER CYLINDERS		
Master Cylinder, Clutch, Shared Reservoir with Brakes Series II & IIA, Non-Girling	1	5737
Master Cylinder - Clutch Shared Reservoir with Brakes Series II & IIA - Girling	1	5738
Master Cylinder, Built-in Reservoir used IIA w/ Power Brakes & all Series III - Non-Girling	1	*NLA 6821
Master Cylinder, Built-in Reservoir IIA with Pwr Brakes & all Series III - Girling	1	6822
Cap for M C with Built-in Reservoir	1	6018
→ SEAL KIT FOR REBUILDING ALL ABOVE	KIT	1945
CLUTCH SLAVE CYLINDERS & PARTS		
Slave Cylinder, II & IIA	1	1999
Push Rod for II & IIA Slave Cylinder	1	1826
Clevis for Slave Cylinder Push Rod	1	6248
Clevis Pin for 6248	1	5887
Cotter Pin for Clevis Pin 5887	1	6871
Bleed Screw	1	5798
Seal Kit to Rebuild Slave Cylinder	1	1957
Slave Cylinder, Series III	1	6751
Push Rod for Slave Cylinder #6751	1	2897
→ SEAL KIT TO REBUILD SLAVE CYLINDER	KIT	1957
RESERVOIR & PIPES		
SERIES II & IIA PIPES		
Reservoir Clutch/Brake Combined (plastic)	1	*NLA 5898
Adaptor - Clutch Pipe to Master Cylinder (3/16" to 1/4")	1	6048
Steel Pipe Reservoir to Clutch Master (LH)	1	5654
Steel Pipe, 3/16" Clutch Master to Hose (LH)	1	*NLA 5656
Steel Pipe, 1/4" Clutch Master to Hose (LH)	1	*NLA 6047
Hose - Flexible for Slave - 15 1/2"	1	77
Cap, Reservoir	1	6018
Clutch Hose 1/4"	1	6897
SERIES III PIPES		
Steel Pipe, Lower, Master Cylinder to Slave	1	6882
Steel Pipe, Upper, Master Cylinder to Slave	1	6896
Hose - Flexible to Slave - 10 1/4"	1	6898
Steel Pipe, Bleed Screw from Slave	1	6752
Bleed Screw	1	5798
BRAKE FLUID		
Due to the higher natural rubber content of British Hydraulic Seals, we recommend that only Castrol LMA Fluid be used. Other Fluids may dissolve your seals.		
Castrol Fluid - 12 oz. Can	as needed	2501
Castrol Fluid - Quart Can	as needed	2521
CLUTCH, MISCELLANEOUS		
Clutch Aligning Tool (plastic)	1	*NLA 2848
Pedal Cover, Clutch/Brake	2	2802
Pedal Return Spring, 3"	1	6542
Pedal Return Spring, 4"	1	5876
Oil Seal Primary Pinion, Series III	1	6709
CROSS SHAFT PARTS		
Connecting tube for Cross Shaft	1	1515
Pin for Cross Shaft	1	3078
Bushing for Cross Shaft	2	827
Felt Ring for Bushing	2	476
Copper Washer for #77 Hose	1	233220



CLUTCH, PLATE & BELL HOUSING

Ref #	Description	Qty	Part #
1	Clutch Disc, 9-1/2" - all	1	5387
1	Clutch Disc, 9" early, using 4074 pressure plate	1	393
2A	Pressure Plate, Series III	1	6827
2B	Pressure Plate, Series I, II, IIA - 9" Clutch (3 finger type) 1 4074	1	6827
2C	Pressure Plate, Series I, II, IIA 9-1/2" Clutch (diaphragm type)	1	5427
not shown	Clutch Aligning Tool	1	*NLA 2848
3	Bush, Primary Pinion	1	8
not shown	Dowel Locating Clutch Cover	2	1310
4	Special Bolt, Flywheel to Crankshaft	8	1468
5	Ring Gear	1	69
6	Stud, Flywheel Housing to Bell Housing	12	1816
7	Sealing Ring, Flywheel Housing	1	442
not shown	Grommet, Bell Housing		
	Clutch Withdrawal Shaft (I, II, IIA)	1	6368
not shown	Grommet, Left Hand Side, Early models	1	6373
not shown	Bellhousing Stud	as needed	1816
not shown	Nut, Bellhousing Stud	as needed	2912
not shown	Dowel, Locating, Flywheel	2	192
not shown	Bolt 3/8" Bellhousing		2912
→	CLUTCH KIT SERIES III	KIT	5380
→	CLUTCH KIT SERIES IIA	KIT	5381
→	CLUTCH KIT SERIES II/IIA 9"	KIT	5382

*NLA = No longer available.



CLUTCH RELEASE, SERIES IIA

Ref #	Description	Qty	Part #
1	Clutch Withdrawal Sleeve	1	6312
2	Bush for Cross Shaft, small	1	*NLA
3	Oil Seal	1	200
4	Withdrawal Thrust Bearing	1	285
5	Bush for Withdrawal race sleeve	1	*NLA 499
6	Joint washer, Suffix "A"	1	*NLA 450
6	Joint washer, Suffix "B" on	1	*NLA 280
7	Bush for Cross shaft, large	1	*NLA
8	Joint washer	1	835
not shown	Boot - Cross Shaft	1	6368

CLUTCH RELEASE, SERIES III

Ref #	Description	Qty	Part #
1	Throw out Bearing	1	7089
2	Fixing staple		
	(should be changed w/bearing)	1	7084
3	Pivot Pin for Clutch Release	1	3779
4	Slave Cylinder Push Rod clip	1	3753
5	Slave Cylinder Push Rod	1	2897
6	Slave Cylinder	1	6751
→	SLAVE CYLINDER REBUILDING KIT	KIT	1957

*NLA = No longer available.