

# FREEDOM GRILL®

PATENT PENDING

## FREEDOM GRILL 100 QUICK-START INSTRUCTIONS

WWW.FREEDOMGRILL.COM

TEL: (858) 513-8332

FAX: (858) 485-5349

### ⚠ CAUTION:

BEFORE DRIVING, Be sure Collar Bolts, Retaining Clip, Clevis Pin and T-handle are secure and that propane tank has been properly stored.

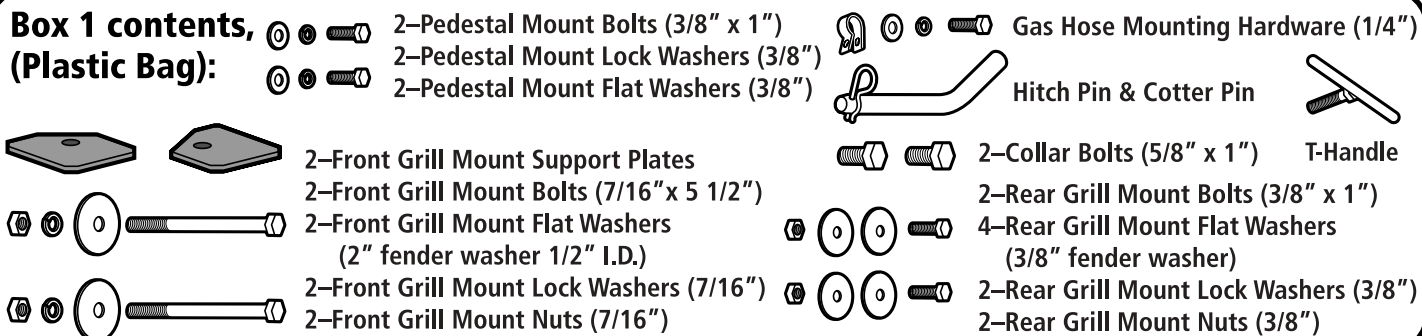
OFF-ROAD DRIVING is not recommended and could result in damage to your vehicle and Freedom Grill.

### TOOLS NEEDED:

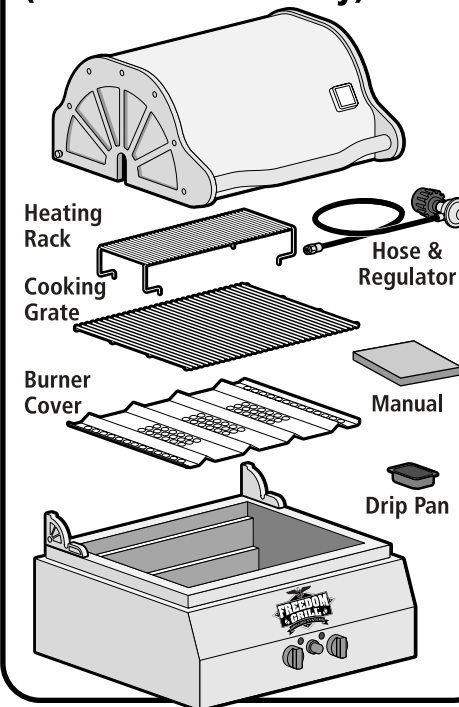
7/16" Wrench  
9/16" Wrench  
5/8" Wrench  
11/16" Wrench  
15/16" Wrench  
Or Adjustable Wrench

⚠ **CAUTION:** Please read all instructions prior to installing or operating the grill. All instructions must be followed in order.

#### Box 1 contents, (Plastic Bag):



#### Box 2 contents, (Grill Head Assembly):

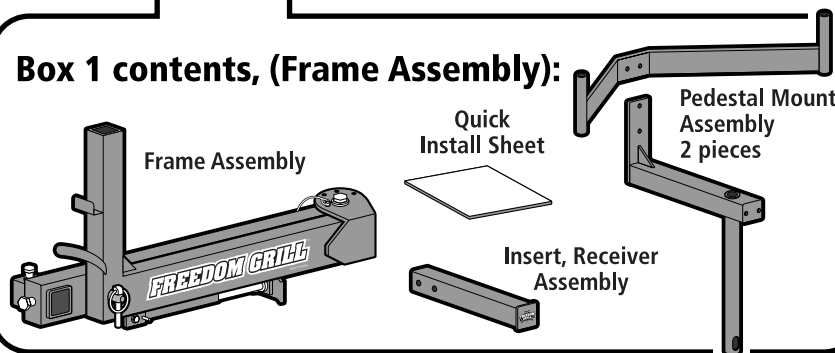


## INSTALLATION OF FRAME ASSEMBLY AND GRILL

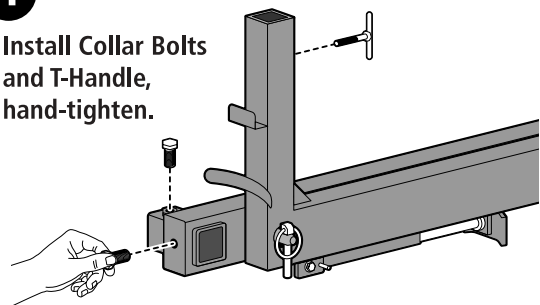
### ⚠ CAUTION:

It is recommended that the vehicle be parked on level ground for installation of the Freedom Grill frame assembly and grill head assembly.

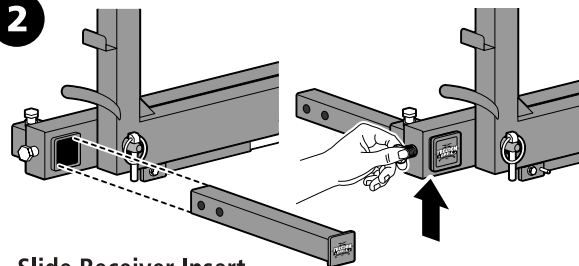
#### Box 1 contents, (Frame Assembly):



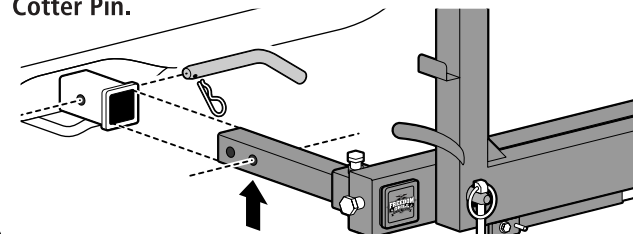
**1** Install Collar Bolts and T-Handle, hand-tighten.



**2** Slide Receiver Insert (logo up) all the way into collar of Frame Assembly. Hand-tighten Collar Bolts.



**3** Lift Frame Assembly & Receiver Insert into vehicle's receiver hitch. Slide Hitch Pin into second hole of Receiver Insert as shown, secure with Cotter Pin.



# INSTALLATION OF FRAME ASSEMBLY AND GRILL CONTINUED

**4** Remove Transport Retaining Clip & Clevis Pin. Open the swing-out arm of Frame Assembly.

**5** Assemble Pedestal Mount using 2-1" Pedestal Mount Bolts, Lock Washers & Flat Washers. Hand-tighten.

**6** With Grill Base upside down on protective surface, attach assembled Pedestal Mount using Front Support Plates, 2 ea.-5 1/2" bolts, 2 ea.-2" Fender Washers, Lock Washers & Nuts. Attach rear mount plate using 2 ea.-1" Rear Mount Bolts, 4 ea. 3/8" Fender Washers, 2 ea. 3/8" Lock Washers & Nuts. Tighten all nuts and bolts.

**CAUTION:** Steps 6-8, Hand protection recommended!

**7** Attach Gas Hose and Regulator to Gas Manifold. Tighten securely. Do not overtighten.

**8** Use Gas Hose Mounting Hardware to attach hose to Pedestal frame.

**9** Lift the assembled Grill Base and Pedestal onto open swing-out arm of Frame Assembly. Use 2 people to complete this step. Be sure that Pedestal post is fully inserted into swing-out arm.

**10** Close swing-out arm, replace Clevis Pin and Retaining Clip. Tighten T-Handle.

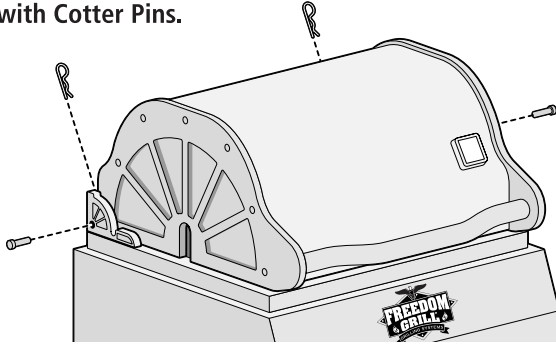
**11** Slide the Frame Assembly on the Receiver Insert to position the Grill Head as close to the vehicle as possible, leaving adequate clearance to avoid vehicle damage.

**12** Level the Grill Head and Frame Assembly. Tighten the Collar Screws securely.

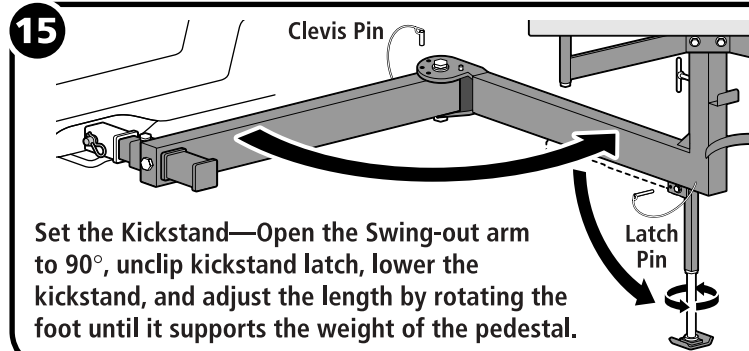
**13** Insert Burner Cover, Cooking Grate and Heating Rack. Be sure to remove any protective wrapping before use.

## INSTALLATION OF FRAME ASSEMBLY AND GRILL CONTINUED

- 14** Install lid so that stop posts sit in the notched lid hinges. Slide the Hinge Posts through the holes on either side of the lid. Lock in place with Cotter Pins.



**NOTE**— Due to variation in vehicle and hitch design, some positioning adjustments may be needed to obtain a “level” position of the grill and arm assembly. These adjustments will mainly be to the hitch collar bolts and if necessary; the pedestal bracket and rear grill mount bolts. Positioning the kickstand is the best way to bring the grill level when cooking.



**15** Set the Kickstand—Open the Swing-out arm to 90°, unclip kickstand latch, lower the kickstand, and adjust the length by rotating the foot until it supports the weight of the pedestal.

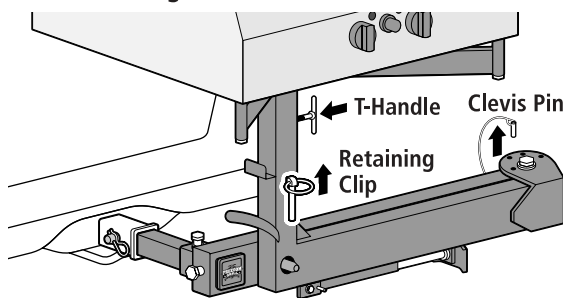
- 16** Close the kickstand and secure the Latch Pin.

Close the Swing-out arm assembly and secure it with the provided Retaining Clip or substitute a padlock to secure the arm and grill in place.

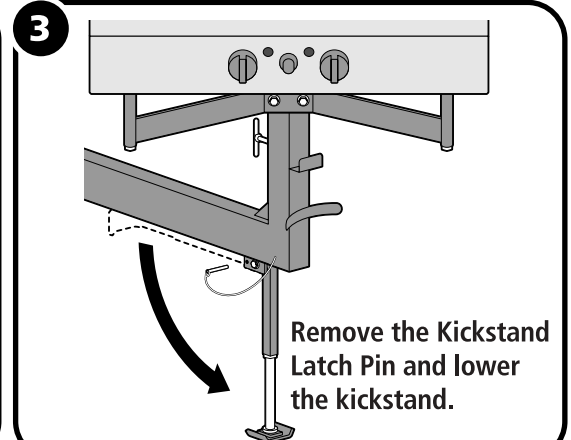
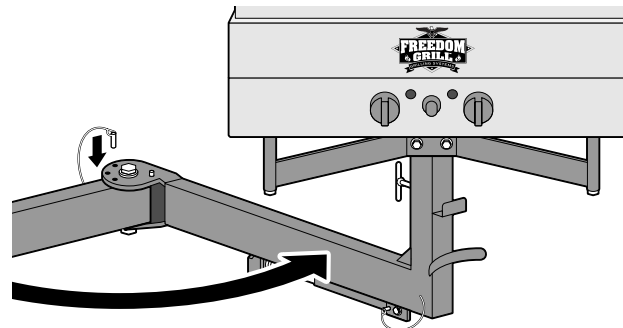
Secure the arm hinge with the attached Clevis Pin.

**GRILLING**  **CAUTION:** The Freedom Grill is designed to be used on level surfaces. An uneven grill could result in grease spillage or fire.

- 1** Remove the Retaining Clip or lock. Remove the Clevis Pin from the Swing-out arm hinge. Loosen the T-handle on the pedestal to allow rotation of the grill head.

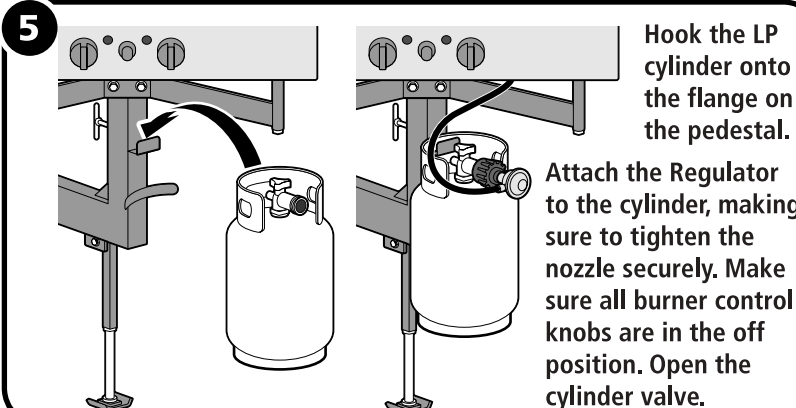
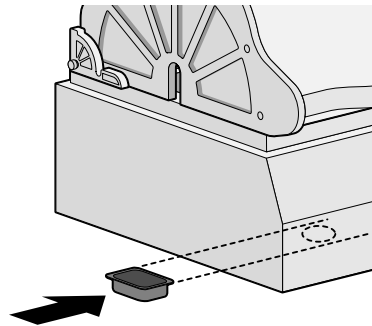


- 2** Open the Swing-out arm to the desired cooking location away from the vehicle. Replace the hinge Clevis Pin to secure the cooking position.



Remove the Kickstand Latch Pin and lower the kickstand.

- 4** Insert the Drip Pan into the brackets under the grill head.




Hook the LP cylinder onto the flange on the pedestal.

Attach the Regulator to the cylinder, making sure to tighten the nozzle securely. Make sure all burner control knobs are in the off position. Open the cylinder valve.

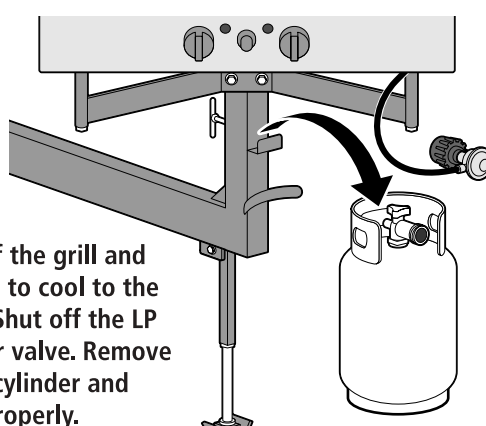
- 6** Open the grill hood. Ignite the grill by pushing one of the burner control knobs down and turning counter-clockwise to the HIGH position. Push the igniter button.

**WARNING:** If the burner does not light, turn the burner control knob to the OFF position and wait 5 minutes.

Once the first burner is lit, the other burner may be lit using the same procedure. With both burners lit, close the lid and pre-heat the barbecue for at least 5 minutes before cooking.

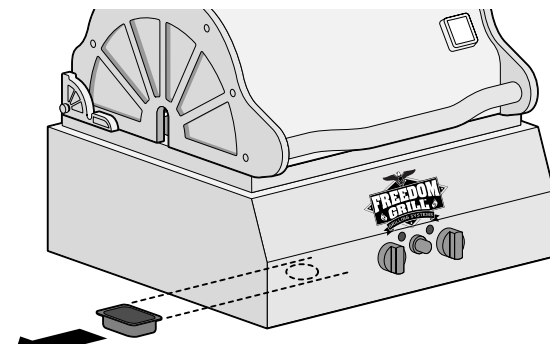
**TRANSPORT**  **CAUTION:** Do not move or drive the vehicle while the grill is in use or with the grill in the unlocked position. Do not use the frame assembly as a step or seat.

**1**

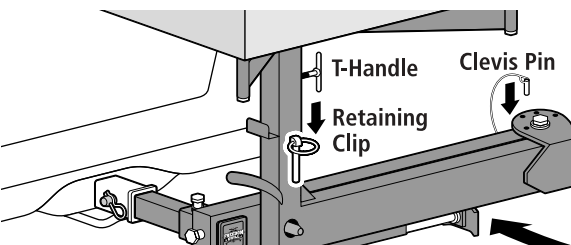


Turn off the grill and allow it to cool to the touch. Shut off the LP cylinder valve. Remove the LP cylinder and store properly.

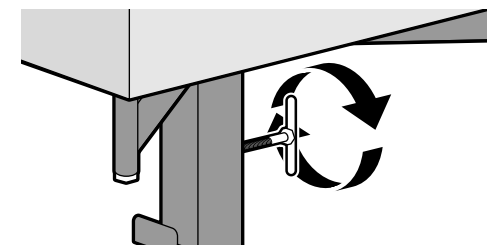
**2** Remove the drip pan. Use Caution to avoid burns, the drip pan may be very hot.



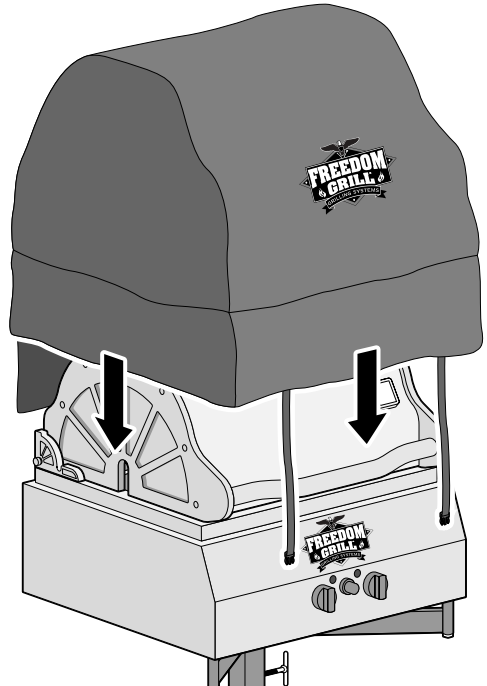
**3** Loosen the T-handle to allow the grill to rotate. Fold up the kickstand and lock into place. Close the Swing-out arm assembly into the lock position and secure it with the Retaining Clip or lock. Replace the hinge Clevis Pin.




**4** Tighten the T-handle. CAUTION—Make sure that the grill does not rotate into a position where it will scratch the vehicle as the arm assembly is closed. The grill head must be straight or the Swing-out arm will not close.



The vinyl Grill Cover fits over the Grill Head and fastens under the grill base using 2 straps with snap-clip fasteners. Tuck the Regulator (with hose attached) into the pocket in the back of the Grill Cover. Use the straps to hold the hose in place so it doesn't dangle.



 **WARNING:** The LP cylinder must be properly stored during transport. Do not allow the cylinder to tip over at any time or it may not function properly.

 **CAUTION:** Please read all instructions prior to installing or operating the grill. All instructions must be followed in order.

